

Dogon - Mali
H - 53; W - 14; D - 16



Dogon Zoomorphic - Mali
H - 40; W - 20; D - 20



Makonde Lipico Helmet Mask, Mozambique
H - 31; W - 18; D - 24.8



Red Monkey Mask Dogon- Mali
H - 40; W - 17.5; D - 18



Bete Guro - Ivory Coast
H - 170; W - 27; D - 28



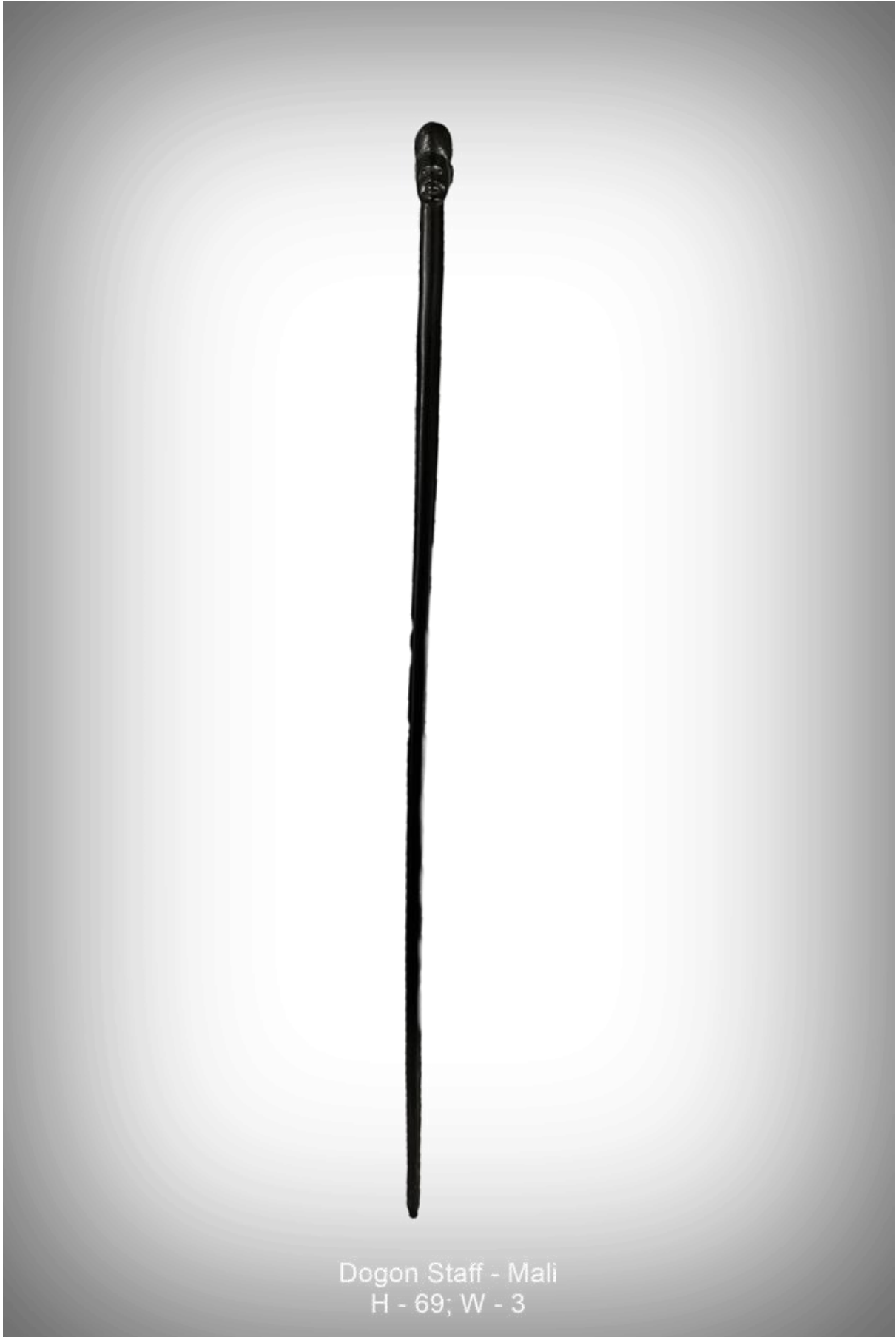
Bozzo Puppet Head - Mali
H - 76; W - 24; D - 22



Ivory Bust - Angola
H - 11.5; W - 4; D - 3.9



Dogon Spear - Mali
H - 110; W - 6.5



Dogon Staff - Mali
H - 69; W - 3



Fang - Cameroon
H - 62; W - 20.5; D - 25



Fang - Gabon
H - 35; W - 20.37; D - 16.5



Gun Dogon - Mali
H - 22; W - 26; D - 11.5



Lulua Initiation Spirit Mask - DRC
H - 35; W - 22; D - 17.5



Ambete Mbete - Gabon
H - 45; W - 21.5; D - 16.6



Dogon Currency Bracelet - Mali
H - 7; W - 12; D - 10.5



Dogon Currency Bracelet - Mali
H - 10; W - 8; D - 7.9



Dogon Currency Bracelet - Mali
H - 10; W - 8; D - 7.9



Dogon Currency Bracelet - Mali
H - 7; W - 8; D - 7.32



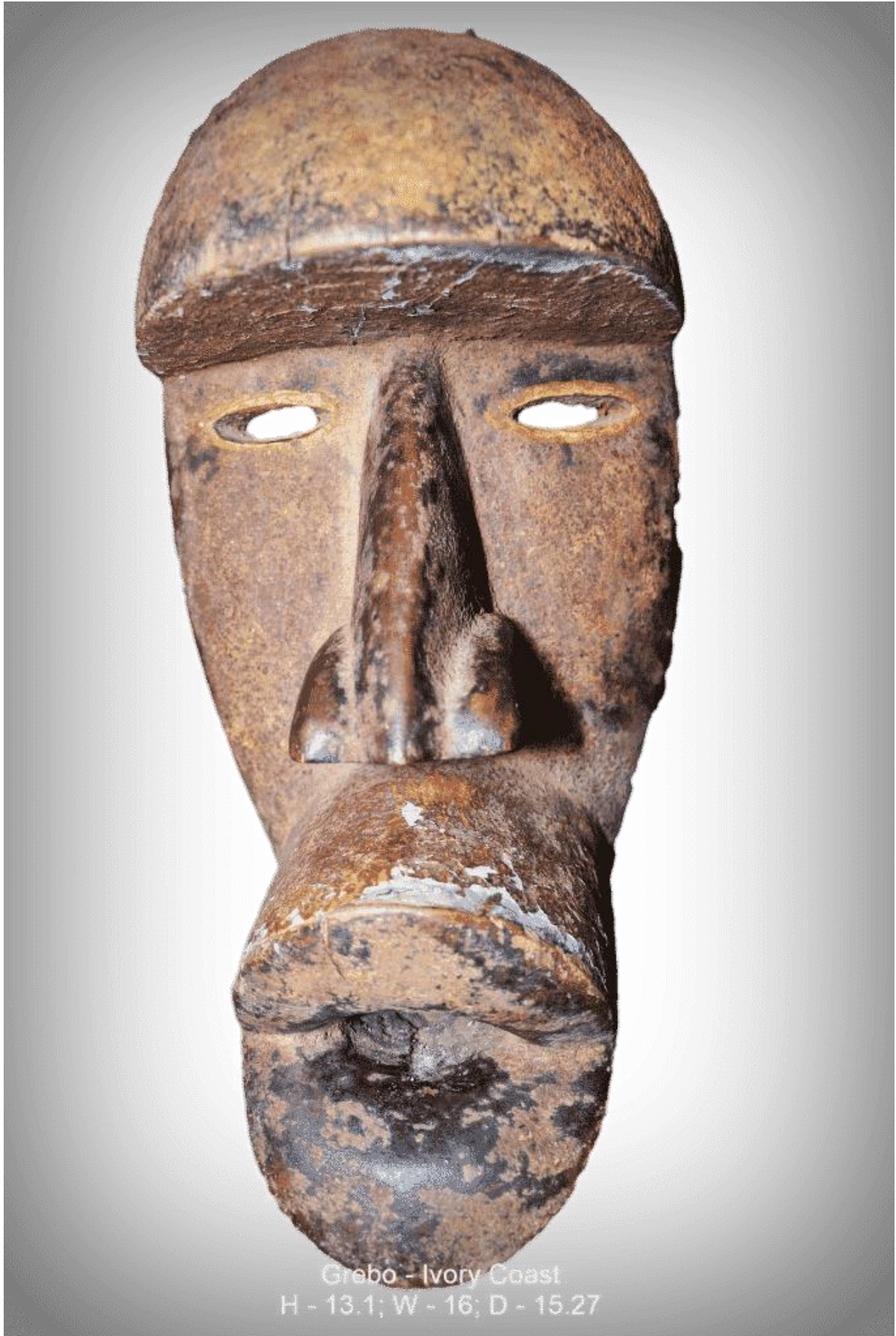
Dogon Currency Bracelet - Mali
H - 10; W - 8; D - 7.9



Dogon Fetish - Mali
H - 31; W - 14.5; D - 13



Ife Shrine Bell - Benin
H - 14.5; W - 7; D - 4.9



Grebo - Ivory Coast
H - 13.1; W - 16; D - 15.27



Ivory Bust - Angola
H - 25; W - 7; D - 1.9



Maasai Gourd - Kenya
H - 43; W - 15.5; D - 13.3



Matakam Fertility Doll - Cameroon
H - 20; W - 9.5; D - 11.14



Namji Fetish Doll - Cameroon
H - 26.5; W - 9; D - 14.4



Grebo War Mask - RCI
H - 40; W - 23; D - 20.6



Pende - DRC
H - 83; W - 36; D - 29.6



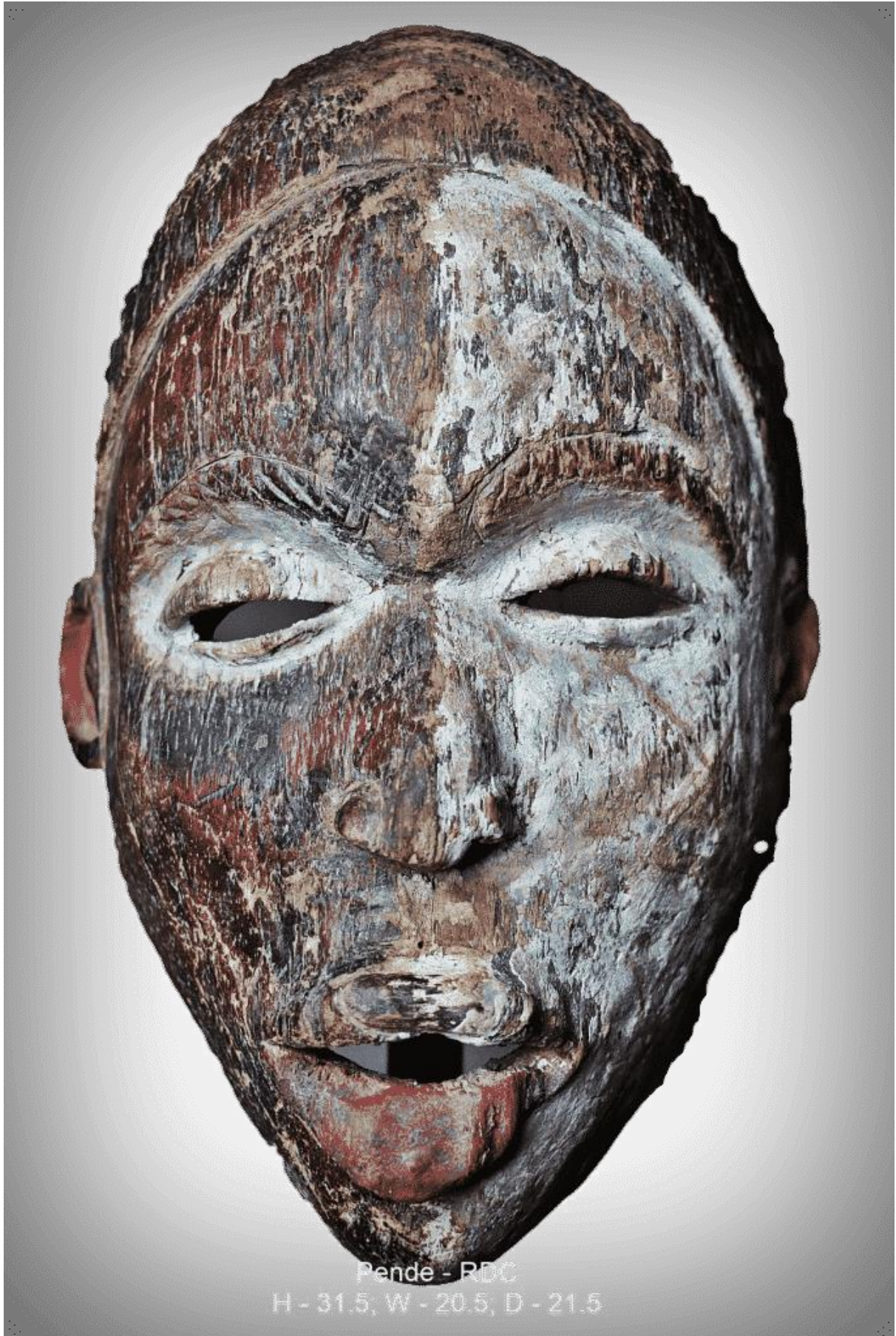
Chamba - Nigeria
H - 34; W - 22; D - 22.8



Igbo Alusi Shrine - Nigeria
H - 82; W - 32; D - 21



Ogoni - Nigeria
H - 29; W - 18.5; D - 16.23



Pende - RDC
H - 31.5; W - 20.5; D - 21.5



Dan - Mali
H - 36; W - 20; D - 16



Dogon - Mali
H - 113.5; W - 14; D - 14



Dogon Ancestral - Mali
H - 92; W - 26; D - 21



Dogon Ancestral Stones - Mali
H - 19; W - 15; D - 10



Dogon Horserider - Mali
H - 77; W - 50; D - 23



Dogon House Post - Mali
H - 96; W - 33; D - 14.5



Dogon Kananga - Mali
H - 107; W - 49.5; D - 33



Doogn Mother-Child - Mali
H - 99; W - 32; D - 28



Dogon Zoomorphic - Mali
H - 91; W - 21; D - 24



Fang Reliquary - Gabon
H - 55; W - 15.5; D - 16.23



Ife King Head - Benin
H - 45; W - 26; D - 18



Seated Ancestral Dogon - Mali
H - 71; W - 29; D - 28.6



Bundu Soweï Helmet, Mende - Benin
H - 45; W - 29; D - 29



Keaka (Kaka) - Cameroon
W - 18; H - 90; D - 19.7



Terracotta Pot, Dogon - Mali
H - 75; W - 41; D - 30



Veranda Post Equestrian - Nigeria
H - 141; W - 25; D - 23



Bronze Dogon Bracelet - Mali
W - 8; H - 8; D - 7.32



Bronze Dogon Bracelet - Mali
W - 8; H - 8; D - 7.32



Dogon - Mali
W - 2.5; H - 32; D - 15.9



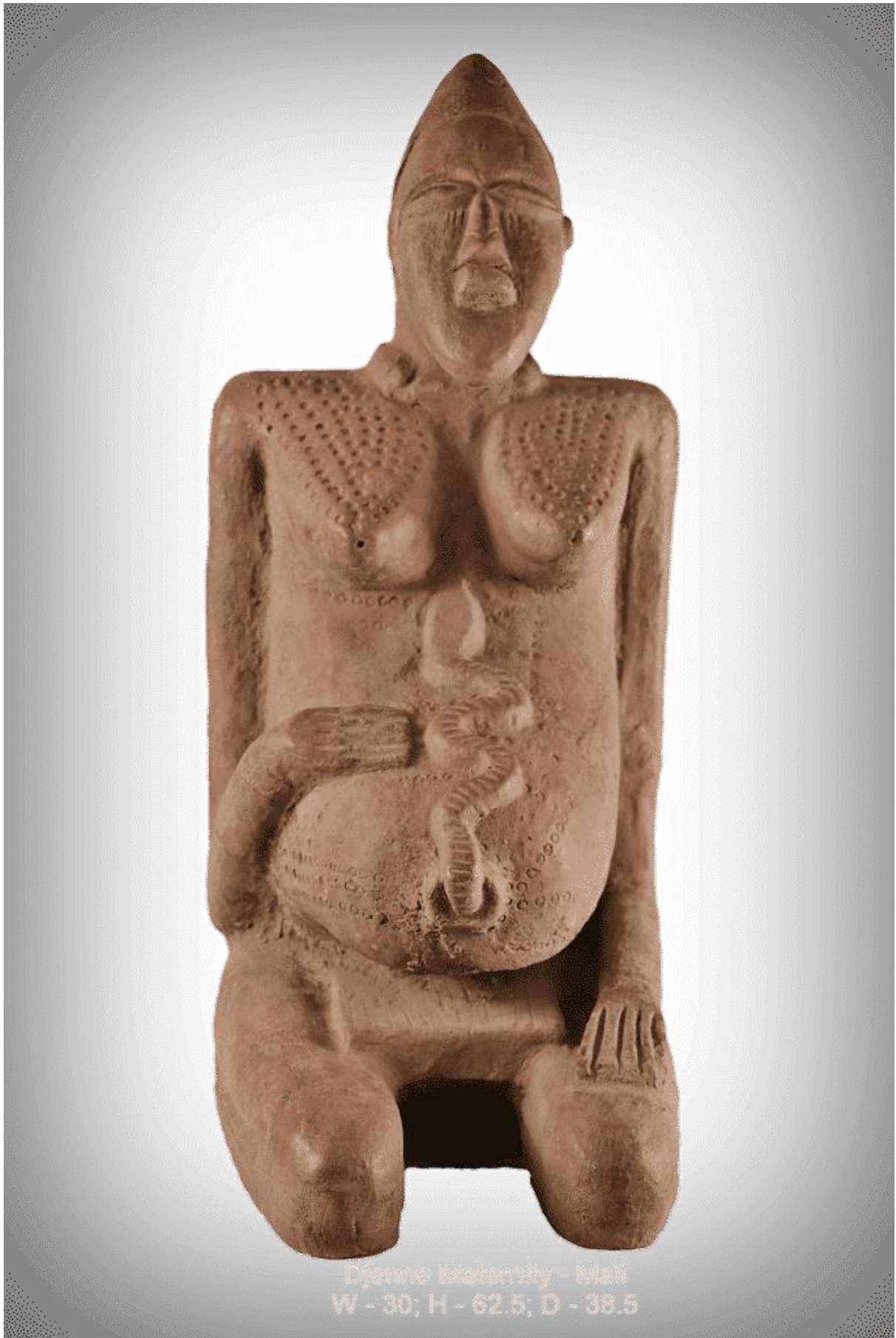
Iron-forged Dogon Bracelet - Mali
W - 3; H - 4.5; D - 12



Bamana Maternity - Mali
W - 20; H - 95; D - 28



Chokwe Jar - Angola
W - 1.7; H - 28; D - 16.1



Djenne Jenensis - Mali
W - 30; H - 62.5; D - 38.5



Horn Fetish Chokwe - Angola
W - 10.5; H - 28



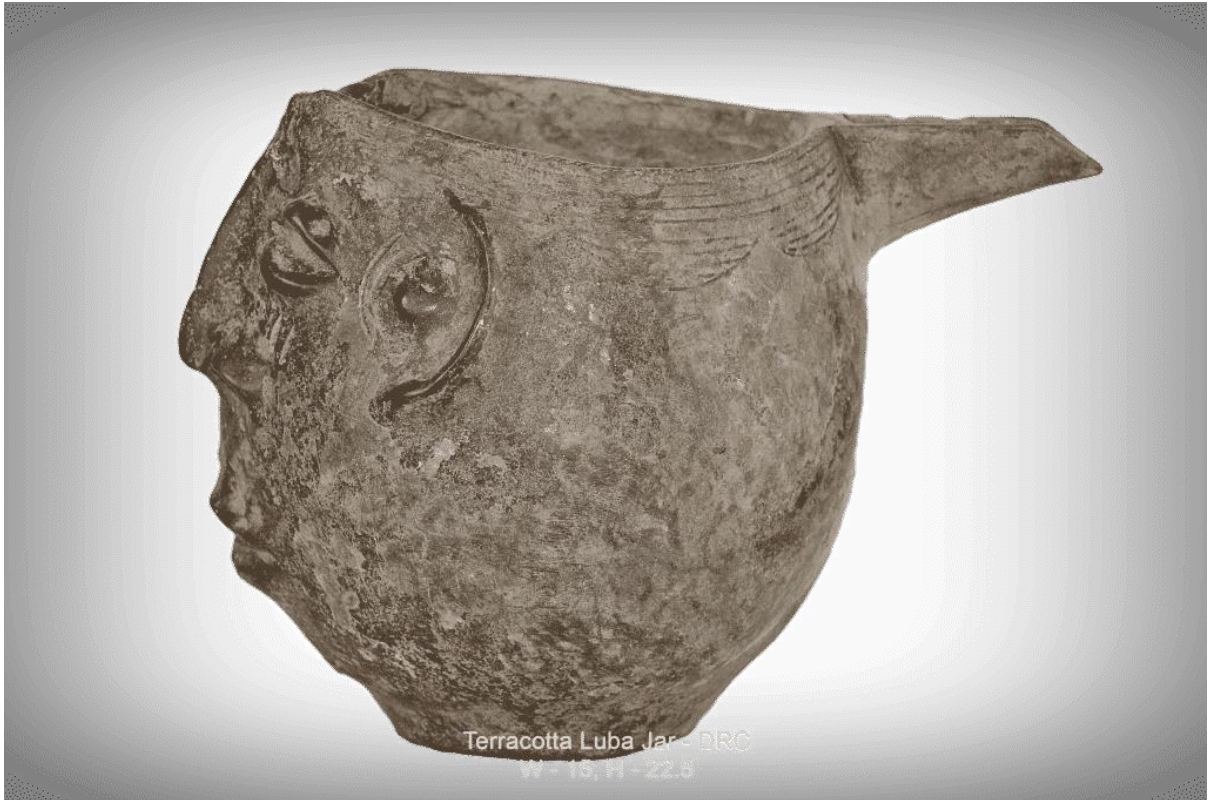
Igbo Helmet - Nigeria
W - 60.5; H - 50; D - 44.5



Songhai Manila Currency Bracelet - Niger
W - 2.15; D - 10.5



Bamana Female Figure – Mali
W - 20; H - 83; D - 23



Terracotta Luba Jar - DRC
W - 15, H - 22.5



Dogon Grieving Figure - Mali
W - 29; H - 82; D - 28.6



Dogon King Figure - Mali
W - 21; H - 70; D - 20.6



Dogon Wooden staff - Mali
W - 2; H - 100; D - 2.8



Lobi Power Figure - Burkina Faso
W - 19; H - 76; D - 17.5



Senoufo Rhythm Pounder - Ivory Coast
W - 24; H - 108.5; D - 16.23



Senufo Seated Monkey - Mali
W - 52; H - 92; D - 3.58



Dogon Fetish Horns - Mali
W - 25; H - 79; D - 19.4



Terracotta Djenne Mother-Child - Mali
W - 25; H - 63; D - 27.37



Dogon Female Figure – Mali
W - 22; H - 87; D - 24



Baule Ancestral Seated Kings Figure - Ivory Coast
W - 3.4; H - 4.3; D - 8.4



Baule Twin Figure - Ivory Coast
W - 24.5; H - 44; D - 19



Bangwa King -- Cameroon
W - 22; H - 68; D - 22



Bamane Marka - Mali
W - 5.2; H - 45; D - 35



Ambete Mbele Figure — Gabon
W - 18; H - 60; D - 21.9



Baule Kpan Mask – Ivory Coast
W - 20; H - 42; D - 17.18



Bidjogo Dugn'be (Bull) Helmet - Guinea-Bissau
W - 41; H - 47.5; D - 10.5



Dogon Bronze Leopard With Lid - Mali
W - 36; H - 31; D - 26



Dogon Ancestral Nommo Stool - Mali
W - 22; H - 23.5; D - 23.23



Dogon Ancestral Nommo - Mali
W - 20.5; H - 53; D - 22.6



Bulu Monkey - Cameroon
W - 25; H - 73; D - 23.55



Bronze Edo Plaque - Benin
W - 27.5; H - 31



Bronze Edo Dwarf Figure – Nigeria
W - 21; H - 46 ; D - 5.6



Equestrian Bronze Oba Plaque – Nigeria
W - 30; H - 41



Dogon Zoomorphic Stool - Mali
W - 24.5; H - 57.5; D - 11.7



Dogon Zoomorphic - Mali
W - 16.5; H - 31.5; D - 16.5



Dogon Iron-forged Equestrian - Mali
W - 18.6; H - 20.5



Dogon Horse Rider Iron-forged - Mali
W - 11.5; H - 14



Dogon Helmet Mask - Mali
W - 23; H - 33.5; D - 23.8



Dogon Horserider - Mali
W - 20; H - 25.5; D - 14.9



Ife Pair Large Leopard Bronze - Benin
W - 26; H - 86; D - 156



Ife Bronze Royal Head - Benin
W - 22; H - 36.5; D - 19



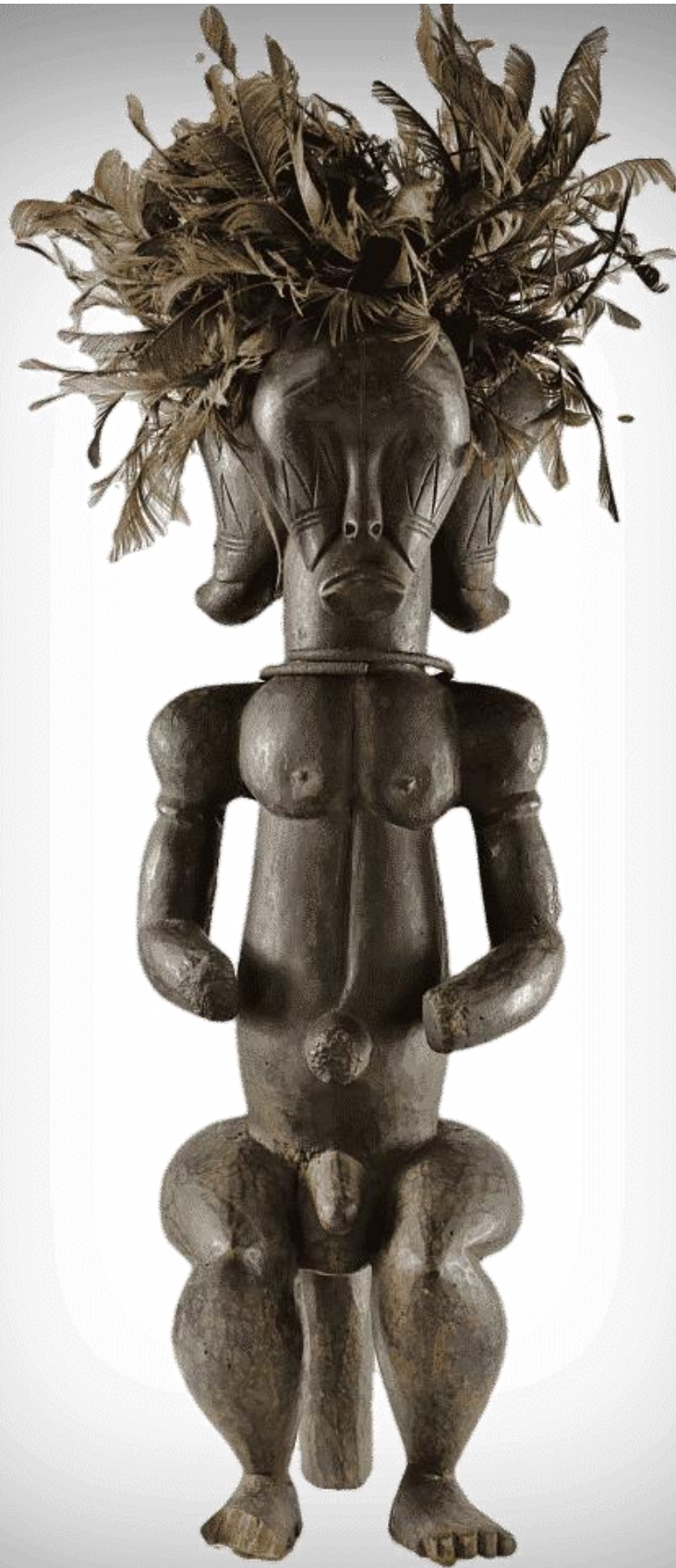
Grebo War Helmet - Ivory Coast
W - 21.5; H - 32; D - 22.44



Grebo War Helmet - RCI
W - 2; H - 4; D - 22.8



Fang-Mvai Reliquary - Gabon
W - 9; H - 22.5; D - 26.5



Fang Guardian Byeri - Gabon
W - 21; H - 65; D - 19.5



Fang Beyri Guardian - Gabon
W - 6.5; H - 61; D - 14.96



Kneeling Yoruba Figure – Nigeria
W - 26; H - 79; D - 26



Iron-forged Horsesider Dogon - Mali
W - 11.5; H - 14



Ife Royal Oba Figure - Benin
H - 57; W - 19; D - 17.6



Kota Reliquary Mbulu Ngulu - Gabon
H - 60; W - 29; D - 22.7



Ife Oba Royal Musician - Benin
W - 30; H - 62 ; D - 26.1



Igbo Mask - Nigeria
W - 19; H - 42; D - 19



Ife Oba Royal Horserider - Benin
W - 68; H - 63 ; D - 21.6



Kota Female Reliquary - Gabon
W - 23; H - 33.5; D - 23.8



Kota Guardian Reliquary - Gabon
W - 28; H - 14.5; D - 15



Kota Mahongwe Reliquary Basket
W - 16; H - 65; D - 20.37



Kota Mahongwe Reliquary Figure - Gabon
W - 16.5; H - 48; D - 19



Kota Mahongwe Reliquary Figure - Gabon
W - 16.5; H - 48; D - 19.5



Luba Ancestral Container - DRC
W - 41; H - 49.5; D - 32.46



Luba Caryatid stool - DRC
W - 23; H - 26.5; D - 22.3



Luba Kalundwe Cup - Congo
W - 28; H - 14.5; D - 4.45



Yoruba Helmet - Nigeria
W - 22; H - 23; D - 26



Warrior Bronze Oba Plaque – Nigeria
W - 38; H - 3.6



Yoruba Ere Ibeji - Nigeria
W - 6.5; H - 28.5; D - 21



Songye Power Figure - Congo
W - 16.25; H - 164; D - 16.23



Songye Kifwebe Mask - DRC
W - 41; H - 47.5; D - 27.37



Songye Nkisi (Power Figure) – DRC
W - 17; H - 57; D - 17.5



Senúfo Bronze Zoomorphic Mask
W - 15; H - 22.5; D - 41



Senufo Ancestral Bronze Mask
W - 15; H - 21; D - 38



Sao Horserider Bronze - Chad
W - 21; H - 24.5



Sao Seated Female - Chad
W - 6; H - 15



Royal Bronze Oba Plaque – Nigeria
W - 13.6; H - 42



Red Monkey Mask Dogon- Mali
W - 20; H - 3; D - 20.7



Oba Royal Warrior - Benin
W - 28; H - 84 ; D - 21.9



Ogoni Elu Mask – Nigeria
W - 21; H - 27; D - 19



Nkisi Yombe Phemba – Congo
W - 22.5; H - 52; D - 16.4



Majestic Dan Mask – Ivory Coast
W - 13; H - 74; D - 33.4



Makonde Lipico Helmet Mask, Mozambique
W - 22.5; H - 29; D - 29



Dogon Zoomorphic - Mali
W - 18.5; H - 59; D - 52.5



Chamba - Nigeria
W - 13; H - 41; D - 10.98



Dogon Fetish - Mali
H - 31; W - 14.5; D - 13



Majestic Dan Mask – Ivory Coast
W - 13; H - 74; D - 33.4



Dogon Zoomorphic - Mali
W - 18.5; H - 59; D - 52.5



Chamba - Nigeria
W - 13; H - 41; D - 10.98



Terracotta Ūrn — Djenne, Mali
H: 142 - W: 56



Toguna Housepost — Dogon, Mali
H: 170 - W: 50



Dogon Tellem - Mali
H - 134; W - 19; D - 17.5



Nkissi Nkonde – Kongo
H - 93; W - 36; D - 31.8



Terracotta Urn — Djenne, Mali
H:132 - W:56



Bozzo Sogobo Boat Puppet - Mali
H - 40; W - 66; D - 15



Koro Horserider, Senoufo - Mali
H - 77; W - 410; D - 30



Pende Mbuya - DRC
H - 45; W - 37; D - 27