



Nigeria - Bamileke Batcham  
W - 22; H - 50; D - 20



Angola - Chokwe Medecine Pot



Angola - Chokwe Smoking Pipe



Angola - Chokwe Smoking Pipe



Angola - Lwena Comb  
H - 14; W - 6; D - 2



Angola - Lwena Comb  
H - 8; W - 14; D - 2



Congo - Luba  
W - 32; H - 15; D - 12



Congo - Denguese  
H - 50; W - 12; D - 12





Congo - Kongo Dog Nail Fetish  
H - 32; W - 10; H - 13



Congo - Songye  
H: 60; W: 11; D: 11



Gabon - Betsi Fang  
H - 33; W - 24; D - 13



Gabon - Betsi Fang  
H - 33; W - 24; D - 13



Gabon - Mahongwe  
H - 70; W - 25; D - 16



Gabon - Fang Ngil  
H - 54; W - 20; D - 17



Gabon - Punu  
W - 23 ; H - 30; D - 23



Ivory Coast - Baule Janus  
H: 26; W: 18; D: 11





Ivory Coast - Bete  
H - 101; W - 21; D - 16



Mali - Malinke  
W - 20; H - 72; D - 20



Angola - Chokwe  
W - 6 ; H - 50; D - 6



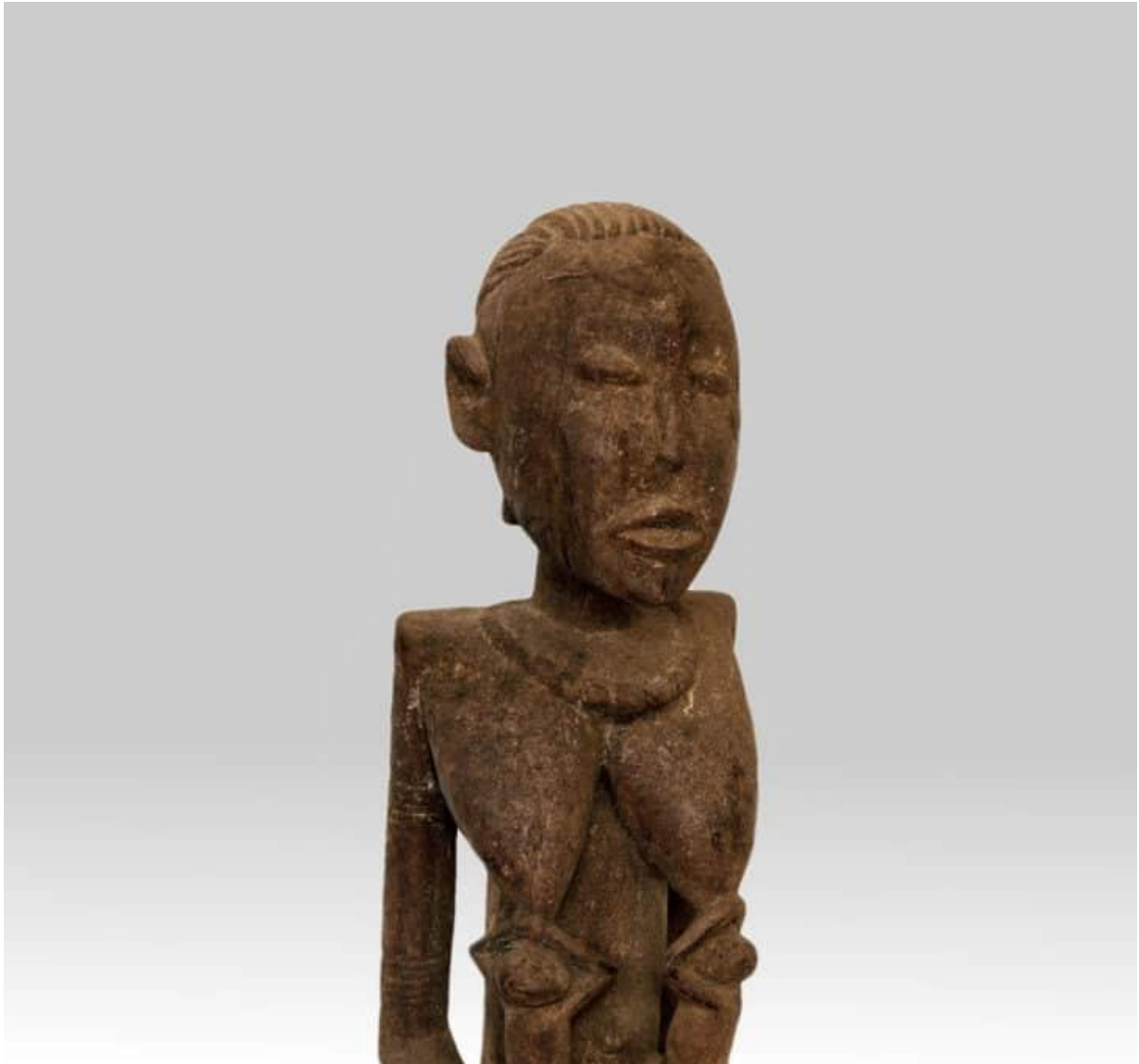
RDC - Yaka



CONGO - NKISI NKONGO  
W - 34; H - 124; D - 34



Liberia - Bete  
W- 19; H - 30; D - 17



Mali - Malinke / Maninka  
W - 15; H- 51; D- 15



Nigeria - Ijo  
W - 20; H - 42; D - 20





RDC - Songye  
W - 6; H - 32; D - 5



RDC - LEGA  
W - 17; H - 20; D - 15



RDC - Yaka Suku  
W - 15; H - 29; D - 7



DRC - Yombe Vili  
W - 23; H - 37; D - 23



DRC - Yombe Vili  
W - 2; H - 34; D - 20



DRC - Yaka Slit Drum  
W - 4.5; H - 21



DRC - Kuba Pwoom Itok  
W - 20; H - 32; D - 15



Chokwe - Angola  
W - 19; H - 27; D - 19





Zambia - Mbunda Sachihongo  
W - 25; H - 30; D - 14



RDC - Kuba  
W - 6; H - 20; D - 5



RDC - Lega



RDC - Suku Smoking Pipe



RDC - Suku



RDC - Yaka Smoking Pipe



RDC - Kuba



RDC - Yaka  
W - 6; H - 23; D - 8



Nigeria - Kaka / Keaka  
W - 18; H- 52; D - 11



Nigeria - Kaka / Keaka  
W - 13; H- 49; D - 13





Mali - Dogon  
A - 34 cm ; L - 16 cm ; P - 15 cm



Nigeria - Kaka / Keaka  
W - 13; H- 49; D - 13



Mali - Malinké/Maninka  
W - 35; H - 100; D - 35



Nigeria - Anang Ibibio  
W - 32; H - 58; D - 14



Nigeria - Chokwe (Quioco)  
W - 10; H - 22; D - 2



Ivory Coast - Senufo



RDC - Kuba  
W - 5; H - 31; D - 6



Cameroon - Kaka  
W - 13; H - 55; D - 13





Gabon - Fang  
W - 5; H - 54; D - 2



Angola - Chokwe



Angola - Chokwe Fly Whisk  
W - 6; H - 22; D - 30



Angola - Chokwe Fly Whisk  
W - 5; H - 22; D - 30



Angola - Chokwe



Angola - Chokwe Pipe  
W - 17; H - 47



Angola - Chokwe Pipe  
W - 13; H - 40



Angola - Chokwe Smoking Pipe



Angola - Chokwe





Nigeria - Yoruba  
W - 25; H - 82; D - 25



Mali - Senufo  
W - 20; H - 136; D - 23



Mali - Dogon  
W - 27; H - 112; D - 27



Mali - Koro  
W - 20; H - 93; D - 15



Mali - Senufo  
W - 18; H - 81; D - 17



Mali - Bamana  
W - 14; H - 59; D - 14



Mali - Dogon  
W - 27; H - 145; D - 30



Guinea - Baga  
W - 27; H - 150; D - 40





Mali - Bamana  
W - 22; H - 18; D - 52



Gabon - Fang  
W - 17; H - 45; D - 15



Gabon - Fang  
W - 24; H - 48; D - 18



Cameroon - Bamoun  
W 61; H - 167; D - 61



DRC Zaire - Nkisi Nkonde Kongo / Vili  
W - 28; H - 73; D - 23



Cameroon - Bronze Tikar Maternity  
W - 17; H - 67; D - 19



Burkina Faso - Bwa  
W - 57; H - 24; D - 11



Burkina Faso  
W - 120; H - 18; D - 21





Angola - Chokwe  
W - 23; H - 73; D - 21



Nigéria  
A - 26 cm ; L - 10 cm ; P - 10 cm



Kongo  
A - 25 cm ; L - 60 cm ; P - 25 cm



Kongo  
A - 24 ; L - 55 cm ; P - 23 cm



Gabão - Aduma  
A - 32 cm ; L - 20 cm ; P - 16 cm



Gabão - Vuvu  
A - 29 cm ; L - 22 cm ; P - 14 cm



Gabão - Punu  
A - 67 cm ; L - 20 cm ; P - 20 cm



Mali - Bamana  
A- 63 cm L- 20 cm P-14 cm



Mali - Bamana  
A- 73 cm L- 25 cm P- 10 cm



Kongo - Luba  
A - 52 cm ; L - 13 cm ; P - 18 cm



Kongo - Chokwe  
A - 60 cm ; L - 15 cm ; P - 15 cm



Gabão - Vubi  
A - 24 cm ; L - 20 cm ; P - 15 cm



Kongo - Bembe  
A - 71 cm ; L - 20 cm ; P - 20 cm





Mali - Bamana  
A - 37 cm L - 18 cm P - 13 cm



Cameroon - Bamoun  
W - 46; H - 30; D - 20



Mali - Bamana  
A- 52 cm L- 10 cm P- 10 cm



Mali - Dogon  
A- 53 cm L- 07 cm P- 07 cm



Mali - Senoufo  
A- 41 cm L- 12 cm P- 06 cm

Mali Senoufo  
A- 45 cm L- 12 cm P- 06 cm



Mali - Senoufo  
A - 69 cm L - 19 cm P - 17 cm



Mali - Djenne  
W - 23; H - 44; D - 32



Lamellaphone "cisandje" - Chokwe Angola



Angola - Chokwe  
W - 52; H - 22; D - 14



Benin - Oba Bronze King  
W - 19; H - 10; D - 6



Cameroon - Bangwa Royal Ancestor  
W - 42; H - 221; D - 42





Cameroon - Bangwa Royal Ancestor  
W - 42; H - 212; D - 42



Cameroon - Namji Fetish Doll  
W - 7; H - 20; D - 5



Chad- Sao Bronze  
W - 10; H - 20; D - 8



Congo- Luba  
W - 20; H - 15; D - 12



Congo - Mangbetu  
W - 14; H - 23; D - 14



Congo - Mbete  
W - 54; H - 15; D - 13



Congo - Nkisi  
W - 12; H - 37; D - 8



Kongo - Pende  
W - 27; H - 34; D - 27





Congo RDC - Mangbetu Harp



Democratic Republic of Congo - Lega  
W - 34; H - 20; D - 14



Democratic Republic of the Congo - Lega  
W - 17; H - 26; D - 5



DRC Mangbetu  
W - 21; H - 57; D - 21



DRC - Songye Kifwebe  
W - 25; H - 38; D - 21



DRC - Yombe  
W - 14; H - 41; D - 12



DRC Songye Kifwebe  
W - 19; H - 35; D - 13



Gabon - Fang  
W - 17; H - 33; D - 17





Gabon - Fang  
W - 19; H - 54; D - 12



Gabon - Fang Byeri  
W - 20; H - 58; D - 20



Gabon - Fang Fetish  
W - 22; H - 52; D - 22



Gabon - Kota Mbulu Ngulu  
W - 13; H - 35; D - 7



Gabon - Kota Mbulu Ngulu  
W - 20; H - 49; D - 7



Gabon - Punu  
W - 18; H - 30; D - 14



Gabon - Punu  
W - 30; H - 32; D - 16



Gabon - Punu  
W - 17; H - 36; D - 22





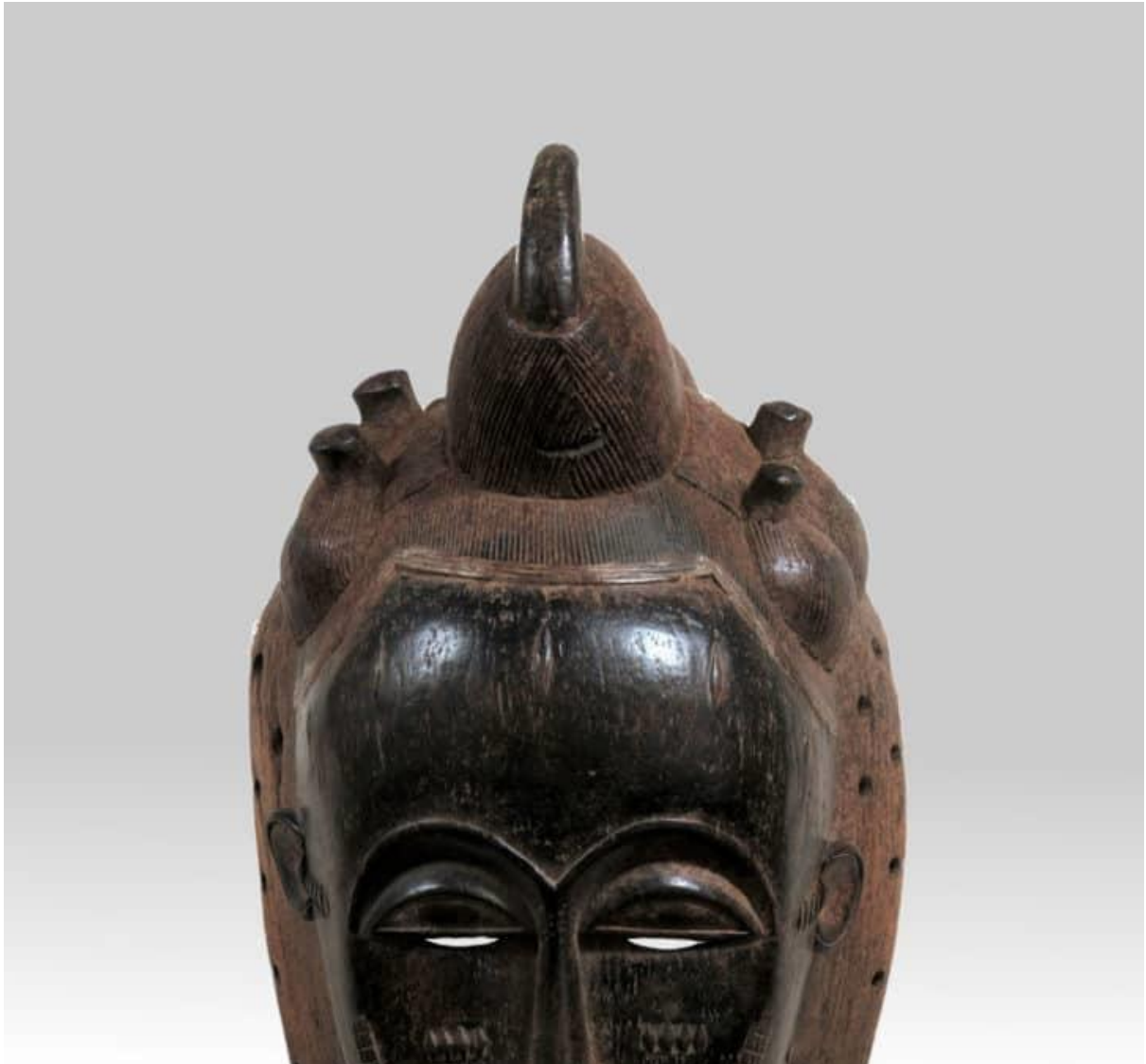
Ivory Coast - Baule  
W - 20; H - 59; D - 13



Ivory Coast - Baule  
W - 20; H - 59; D - 20



Ivory Coast Baule  
W - 20; H - 45; D - 20



Ivory Coast - Baule  
W - 25; H - 49; D - 34



Ivory Coast - Baule  
W - 21; H - 32; D - 27



Ivory Coast - Dan Spoon  
W - 18; H - 64; D - 14



Kongo - Chokwe  
W - 19; H - 25; D - 17



Kongo - Kuyo  
W - 27; H - 110; D - 23





Liberia - Dan  
W - 14; H - 25; D - 9



Mali - Bamana Maternity  
W - 19; H - 81; D - 19



Mali - Bamana  
W - 16; H - 54; D - 16



Mali - Bamana  
W - 15; H - 73; D - 15



Mali - Bamana  
W - 20; H - 37; D - 11



Mali - Bamana  
W - 21; H - 38; D - 17



Mali - Bamana Marka  
W - 44; H - 14; D - 7



Mali - Bamana Maternity  
W - 16; H - 62; D - 16





Mali - Bamana Maternity  
W - 33; H - 125; D - 30



Mali - Bamana Maternity  
W - 16; H - 76; D - 14



Mali - Bamana Maternity  
W - 15; H - 72; D - 15



Mali - Fetish Dogon  
W - 11; H - 62; D - 11



Mali - Bamana Staff  
W - 24; H - 90; D - 06



Mali - Bamana  
W - 20; H - 94; D - 20



Mali - Bamana Staff  
W - 11; H - 70; D - 11



Mali - Djenne Terracotta  
W - 08; H - 37; D - 08





Mali - Dogon  
W - 08; H - 59; D - 08



Mali - Dogon  
W - 18; H - 46; D - 40



Mali - Dogon  
W - 15; H - 43; D - 15



Mali - Dogon  
W - 13; H - 59; D - 13



Mali - Dogon  
W - 20; H - 61; D - 20



Mali - Dogon  
W - 19; H - 100; D - 19



Mali - Dogon  
W - 08; H - 34; D - 08



Mali - Dogon  
W - 17; H - 75; D - 17





Mali - Dogon  
W - 09; H - 47; D - 09



Mali -Dogon Bronze  
W - 02; H - 09; D - 02



Mali - Dogon  
W - 02; H - 10; D - 02



Mali - Dogon Bronze Bell  
W - 9; H - 29; D - 7



Mali - Dogon  
W - 41; H - 14; D - 07



Mali - Dogon Bronze Currency  
W - 09; H - 10; D - 03



Mali - Dogon Bronze  
W - 15; H - 15; D - 1



Mali - Bronze Dogon  
W - 13; H - 02; D - 01





Mali - Dogon Bronze  
W - 11; H - 10; D - 01



Mali - Dogon  
W - 13; H - 52; D - 13



Mali - Dogon Horserider  
W - 8; H - 9; D - 3



Mali - Dogon Maternity  
W - 20; H - 128; D - 25



Mali - Dogon Maternity  
W - 20; H - 102; D - 17



Mali - Dogon Maternity  
W - 22; H - 120; D - 22



Mali - Dogon Maternity  
W - 15; H - 46; D - 15



Mali - Dogon  
W - 25; H - 93; D - 25





Mali - Dogon  
W - 24; H - 60; D - 24



Mali - Dogon Sirius Pendant  
W - 7.5; H - 01; D - 7.5



Mali - Doogn Spear  
W - 05 H - 106; D - 03



Mali - Dogon  
W - 15; H - 89; D - 12



Mali - Dogon Spear  
W - 05; H - 101; D - 03



Mali - Kanaga Dogon  
W - 55; H - 90; D - 16



Mali - Kono Helmet Dogon  
W - 23; H - 78; D - 11

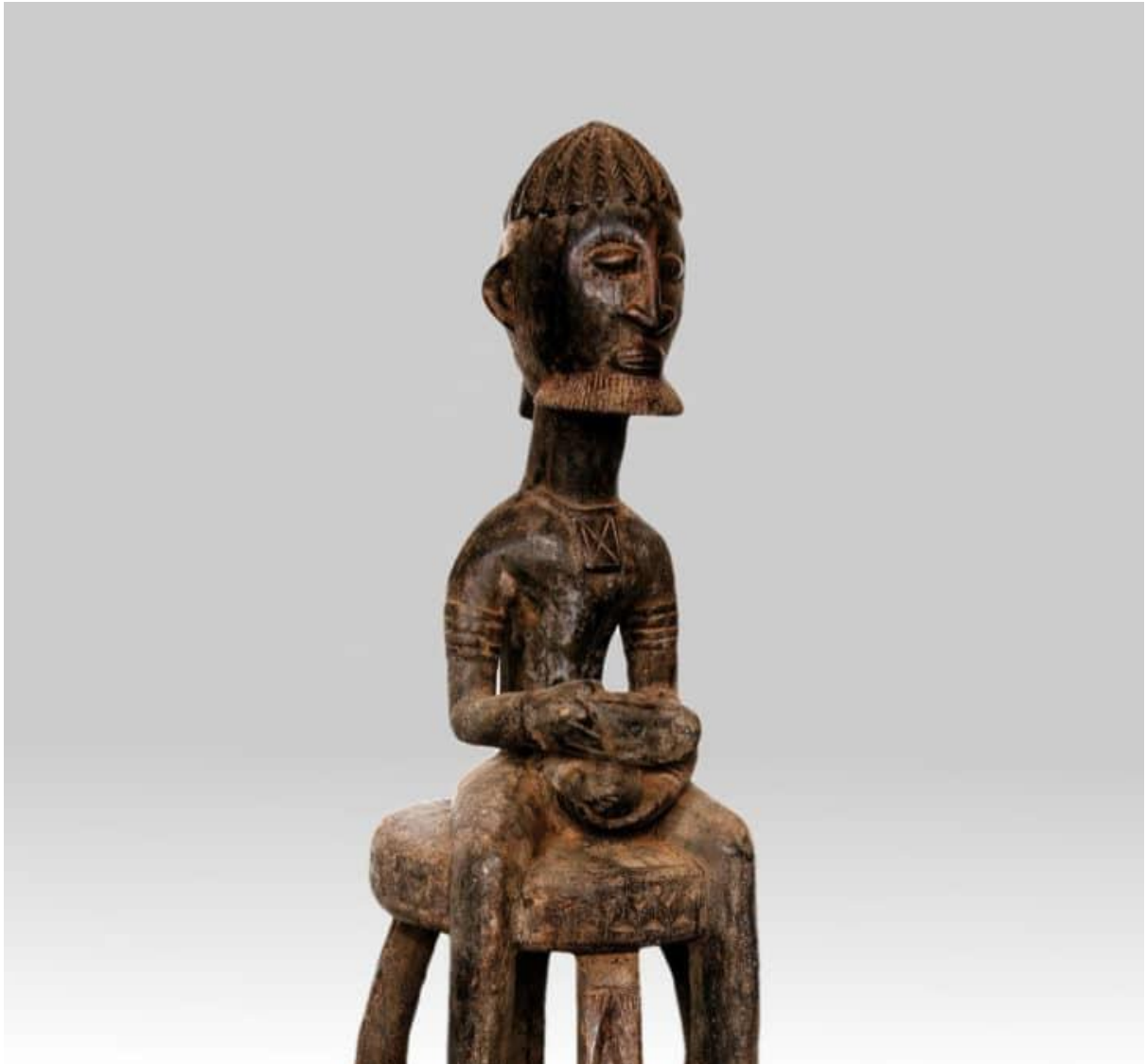


Mali - Koro  
W - 41; H - 74; D - 15





Mali - Nommo Dogon  
W - 20; H - 72; D - 20



Mali - Nommo Dogon  
W - 22; H - 75; D - 22



Mali - Nommo Figure  
W - 10; H - 32; D - 12



Mali - Senoufo  
W - 15; H - 89; D - 12



Mali - Senufo Janus  
W - 18; H - 34; D - 09



Mali - Senufo Maternity  
W - 6; H - 16; D - 10



Mali - Senufo Sejen Bird  
W - 24; H - 68; D - 18



Mali - Tellem Dogon  
W - 49; H - 97; D - 24





Mali - Dogon  
W - 21; H - 80; D - 21



Mali - Senufo  
W - 33; H - 92; D - 18



Nigeria - Ife Head  
W - 22; H - 34; D - 22



Nigeria - Mambila  
W - 12; H - 33; D - 9



Nigeria - Bamileke  
W - 33; H - 130; D - 36



Nigeria - Yoruba Veranda Post  
W - 25; H - 210; D - 25



Nigeria - Chamba  
W - 8; H - 53; D - 8



Nigeria - Mambela  
W - 38; H - 158; D - 10





Nigeria - Mumuye  
W - 14; H - 92; D - 14



Nigeria - Tikar  
W - 20; H - 30; D - 15



Nigeria - Yoruba Helmet  
W - 38; H - 47; D - 24



Nigeria - Koro  
W - 18; H - 64; D - 12



RDC - Yaka Cisandje Lamellaphone  
W - 22; H - 41; D - 8



Sierra Leone - Mende  
W - 26; H - 47; D - 26



Congo -Tabwa



Tabwa - Congo





Zambia - Chokwe  
W - 23; H - 35; D - 23



Cameroon - Helmet Mumuye  
W - 19; H - 34; D - 12



Ivory Cost - Baule Ancestral Royal Figures  
W- 83'; H - 30; D - 30



Zambia - Chokwe  
W - 20; H - 33; D - 33



Mali - Dogon Balafon Players  
W - 23; H - 68; D - 21



Mali - Dogon Nommo  
W - 14; H - 54; D - 14



Mali - Dogon Nommo  
W - 19; H - 86; D - 19



Mali - Senoufo Royal Pair  
W - 18; H - 126; D - 17





Nigeria - Bamileke Batcham  
W - 22; H - 50; D - 20



Burkina Faso - Lobi Janus Dangerous Bateba  
W - 84; H - 202; D - 29



Burkina Faso - Lobi Janus Exceptional Bateba  
W - 66; H - 200; D - 30



Burkina Faso - Lobi Sad Bateba  
W - 20; H - 172; D - 30



Burkina Faso - Lobi Exceptional Bateba  
W - 42; H - 188; D - 30



Togo - Moba Tchitcheri  
W - 16; H - 150 ; D - 18 cm